



STRATHEARN
ARTS

May 2023

TRUSTEES ANNUAL REPORT



“Strathearn Arts is an inclusive, forward thinking, adaptive organisation which strives to break down the barriers to community participation, and for those reasons, is an asset to have in the community. ”

Marisa Carradice, Social Prescriber

Contents

4	Letter from the Chair
6	About Strathearn Arts Vision & Values
8	Who we Serve
10	Our People Our Volunteers Our Members Board of Trustees Meet the Team
14	Our Programme
16	Arts & the Community Partnerships & Cooperation
18	Building Developments The Building Today Planned Developments
22	Financial Report
23	Our Funders and Sponsors



A letter from the chair

October 2023 will see the 10th anniversary of the foundation of the Strathearn Artspace charity. Our founders, two local artists David Campbell and Tom Barron had the vision to create a venue in Crieff where the community of Strathearn could come together to enjoy high quality artistic and cultural experiences right on their doorstep. In the intervening years, thanks to the dedicated work of our trustees, volunteers, and staff that vision has grown and developed to provide not only a great variety of experiences including film, theatre, live music, comedy, dance, and exhibitions, but also dedicated programmes to benefit socially isolated and disadvantaged members of our community, those with mental and physical health challenges and our young people. We see this as an increasingly important pillar of our activities and anticipate our range of offerings to grow in the future. We have been encouraged by the rate at which audiences are returning to our increasing range and variety of events, imaginatively curated by our Arts Programme Manager Angela Lennon, and we have seen a significant increase in those choosing to hire our facilities for their own events and activities.

The past year has seen a remarkably successful return to normality for Strathearn Arts following the restrictions associated with the COVID pandemic. I would like to acknowledge the support of our funders and other agencies that have provided emergency funding relief during this period that enabled us to survive and resume our normal operations with renewed strength. We have been encouraged by the rate at which audiences are returning to our increasing range and variety of events and we have seen a significant increase in those choosing to hire our facilities for their own events and activities.

We have also seen our position at the core of the artistic community in the area become increasingly established. Local groups including the Crieff Choral Society and the Crieff Drama Group regularly use our facilities for rehearsals and performances and we provide ticketing services for these and other groups through our box office. Our shop is providing a showcase in the heart of town for an increasing number of local artists and craft makers to display and sell their work, as well as selling our own stock of books and other products.

Whilst this upturn in activity benefits our overall financial position, in common with most charities in our sector we remain dependent on external funding sources to maintain our operations and support new programmes and community initiatives. We are fortunate to count on funders like the Gannochy Trust for support of our core activities and sponsors of specific elements of our programme including The Glenturret Distillery and I extend my thanks to them and our other funders and sponsors for their continued support. The search for new sources of funding, sponsorship and donations and submitting applications represents a significant element of the work of our senior staff, Angela Lennon and Gordon Mc Dowall and our Treasurer, Barry Hargrave and the importance of this activity cannot be underestimated.

Over the past year there have been some staff changes including our former Director, Phil Mestecky, leaving the organisation. We thank Phil for the exceptional work he undertook in moving Strathearn Arts from an all-volunteer run organisation to the successful professional entity with employed staff we see today. Whilst we undertake a review of our future staffing requirements and structure, Angela Lennon, our Arts Programme Manager has ably stepped up to the position of Interim Director, whilst continuing with her existing responsibilities and with extended hours. Our recently appointed Finance and Operations Manager, Gordon McDowall, has made great strides in improving the systems, processes, and reporting requirements of a larger and growing arts organisation, supporting our work to make the charity more robust and resilient.

Whilst the work of our staff has had a significant impact in further professionalising and developing the charity, we continue to rely on a dedicated and growing group of volunteers who give their time and skills to assist us in many aspects of the operations of Strathearn Arts. My thanks go to them for their greatly valued support without which we would not be able to achieve the level of activity we are currently sustaining nor develop our ambitious plans.

We are continuing to progress our robust and realistic plans for a comprehensive refurbishment of our building to bring it fully in line with our aims and ambitions. The feasibility study and concept design for the project was developed by Fraser Livingston Architects and featured detailed plans for the layout and technical capabilities provided by a specialist theatre design consultant. This has now been augmented by the preparation of a comprehensive business plan and funding strategy with the support of consultants Athena Solutions. We are very encouraged by the outcome of this work and excited to move forward with the next stages of the project as quickly as possible.

Finally, I wanted to thank my fellow trustees for their support, and in particular my fellow office bearers, our Secretary, Fiona Warrender and our Treasurer, Barry Hargrave who both dedicate an exceptional amount of their time and expertise for the benefit of the charity. We have also been fortunate to recruit three highly qualified new trustees. Craig Pagett and Madeleine Smallwood, both of whom have professional experience and skills which will be very valuable in relation to our building development project, and Elizabeth Hodson who brings extensive experience of the arts sector. We are still actively seeking to recruit new board members, particularly a trustee with specific finance and accounting skills, and are always keen to bring in new volunteers for a whole range of roles, so if you are interested in joining us at this exciting time in our growth, please get in touch.

Gordon Wright
Chair

About Strathearn Arts

Strathearn Artspace was founded in October 2013 as a Scottish Charitable Incorporated Organisation (SCIO SC044319) with the broad charitable purpose to support the arts in Strathearn through promotion, education, community engagement and the provision of a sustainable arts centre in Crieff.

Since then, the charity has grown and evolved, presenting a diverse programme of artistic and cultural events and exhibitions at our main base at 6 Comrie Street. In 2019, we rebranded as Strathearn Arts to reflect the expanding nature of our programme beyond the four walls of our building and into the community.

From its inception, the charity has always relied on a small but passionate group of volunteers and members. In 2019 a commitment to long-term sustainability was made with the employment of paid staff.

Their recruitment has allowed the organisation to move rapidly through our next stage of development, delivering a rich programme of concerts, theatre, ceilidhs, folk club, tea dances, comedy, visual art exhibitions, author readings and a cinema. At our heart, we are a community-based project whose aim is to work alongside the wealth of arts organisations and creative people to promote Strathearn as a cultural hub within the Scottish arts context.

The charitable purposes of Strathearn Arts are:

The provision of recreational facilities to create and run a sustainable arts centre for the residents of Crieff and Strathearn and the wider community to improve their conditions of life through participation and enjoyment of the creative arts.

To promote and advance the arts, culture and heritage to residents and other people who visit our community by providing opportunities to participate in artistic, cultural and creative endeavours.

To advance the education of the public through the promotion of the appreciation of and participation in the arts and through the provision of training and education in arts, heritage and culture.

To advance community development by encouraging the residents to actively participate in making decisions relating to local cultural issues.

Who we serve

We are an inclusive organisation that serves all within our community and also those visiting us from outwith our local area of Strathearn and Strathallan.

Our programme is designed around this goal, and we pride ourselves that the rich variety of events, activities and performances that we put on really do provide something for everyone.

More specifically, we place a particular priority on the following groups and their needs.

Children and young people

We engage with young people, schools, and youth groups to provide access to high value opportunities to engage with the arts. Where we can, we bring activities and events to the area to remove barriers of cost, time and inconvenience involved in travel to larger towns and cities. We also act as a home for several classes which offer children the chance to participate in music, dance and art.

Families

In rural locations like Strathearn, there are limited opportunities for experiencing the arts without incurring cost and inconvenience of travel to larger centres. We are growing the number and variety of events and activities aimed at families. Recent examples include 'Rocket Post', and a programme of family-friendly film screenings including popular blockbusters such as 'Encanto' and 'Peter Rabbit 2: The Runaway'.

People living with physical and/or mental health challenges

The benefits of engaging with art for physical and mental well-being are well documented. We engage with local professionals from the NHS, Perth and Kinross Council's Stronger Communities Team and others within our community to identify need and offer opportunities to address them. Examples include the Dance for Health initiative, funded by The Robertson Trust and individual donations, which offers 1 or one online dance/movement classes per week for people who are not comfortable attending in-person activities. This class has recently moved to one in person class 'Drop in to Dance'. Funding from Foundation Scotland and Strathearn and Strathallan Action Partnership, allowed us to run Art for Wellbeing which provided weekly art classes for people who have mental health challenges. Recently, Foundation Scotland awarded additional funding to extend the programme for the participants and we are now running a free 8-week series of workshops exploring printmaking, led by local textile artist Helen Gallogly. Working in partnership with Tayside Healthcare Arts Trust we also ran an art class for people who had suffered from a stroke or had other neurological conditions. Tayside Healthcare Arts Trust are keen to work with us again and run another series of workshops in the Autumn.



Those at risk of isolation

Living in such a rural location as Strathearn brings many rewards but also several challenges. For some, the risks of isolation and loneliness is very real. Through our volunteering programmes, we offer people a worthwhile and rewarding opportunity to help the running and development of our community arts centre.

Volunteering brings people together and gives pride, confidence and satisfaction knowing that they have contributed. In addition, our events provide an opportunity to socialise and meet like-minded people ensuring a greater community connection. For example, our Tea Dances are well-attended and extremely sociable and inclusive. No matter if you are an expert dancer or prefer to sit and watch and enjoy the music you are very welcome to come along.

Artists, makers, musicians and other local creatives

Strathearn is home to a disproportionately large number of creative people. From musicians, writers, filmmakers and artists to photographers, dancers, set-designers, and craft-makers. There are also many community groups and clubs active in the arts and music. Strathearn Arts is well-placed to support and encourage the development of creative activity and has been playing an increasingly active role in this area. Examples of this include: the Box Office and Shop, opened in May 2021 and now plays host to over 30 local artists and makers who sell their arts and crafts through the shop. Partnerships with groups such as Strathearn Music Society, Crieff Drama Club and Crieff Choral Group offer a range of benefits including use of Strathearn Arts' Box Office to sell tickets to their events, rehearsal, and performance space and, in some cases, help with admin and promotional activities. We also give priority to local professional artists to deliver our creative learning workshops and activities.

Visitors and holidaymakers

Strathearn is a popular visitor destination and clearly already has a lot to offer visitors. When the sun shines, there are few more beautiful parts of the country.

There are historical sites and excellent food and drink on offer too. However, there is a huge opportunity for Strathearn also to draw visitors to the area for the wealth and vibrancy of its arts and music. Working together as a community, a burgeoning arts scene in Strathearn can give visitors a reason to come to the area, more to do when the weather is not so good and reasons to return for a repeat visit. All of this will lead to economic benefits to the area and a stronger community.

Our people

People are at the heart of Strathearn Arts. Its smooth operation depends on a wide range of people to all play their part and all pull together. Our team of staff, our trustees and our volunteers work with energy and dedication to deliver our ever-growing programme of events and activities for the community.

Our Volunteers

Without our amazing team of around 50 volunteers, it would be simply impossible to operate the charity and deliver the growing programme of events. Our volunteers come from all walks of life and contribute their time on a wide variety of activities.

From helping at events or behind the bar to tackling maintenance and repairs, and from working in the Box Office and Shop to distributing the regular printed programme brochure, volunteers are crucial.

As the programme of events and activities grows and develops, we are going to need more people to get involved as volunteers, so if you love the arts and want to help make Strathearn Arts even better then do get in touch – we have lots that you can help with!

Our Members

Strathearn Arts currently has 116 members. Membership is open to all residents of Crieff or interested parties in Strathearn and its environs. Any person who wishes to become a member must sign a written application for membership. The application is then considered by the board at its next board meeting. The board may, at its discretion, refuse to admit any person to membership. When a member wishes to withdraw their membership, they must give notice to the organisation in writing.

Members act in the interests of the charity, and seek, in good faith, to ensure the charity acts in a manner which is consistent with its charitable purposes. They are invited to attend the Annual General Meeting (AGM) and can take part in some decisions like making changes to the constitution and electing board members. Members are not required to pay a subscription.

Our Board of Trustees

The trustee board is made up of seven hard-working and loyal volunteers overseeing the governance of the organisation, managing risk, and ensuring its stated charitable goals are being met. In addition to their board duties, they will often be found supporting the staff team with a wide range of volunteer tasks and projects providing expertise and a valuable additional resource.

Chair Gordon Wright

Gordon has had a broad ranging career including senior positions in the UK and overseas with a major international company, secondment to the UK Government as an adviser and freelance consulting. He offers experience in business development, marketing, contract negotiation and a range of practical skills. He has served on number of boards including the American School of Brasilia and more locally, the Breadalbane Tourism Circle. Gordon has a keen interest in film, theatre and music and joined the board of Strathearn Arts in 2016, in addition to his position as Chair he has a focus on the maintenance and future development of our facilities.

Secretary Fiona Warrender

Formerly Director and Council Member of the British Association of Occupational Therapists and Country Board Chair of Royal College of Occupational Therapists, Fiona has Lectured at Robert Gordon University and is the author of several occupational therapy publications. She joined the board in 2020 bringing experience in governance and risk management and is keen to use her skills in partnership working and external influencing to benefit the charity. She has a lively interest in the arts and through her professional experience she is keen to explore the value of artistic experience to benefit the wider and more disadvantaged sections of the community.

Treasurer Barry Hargrave

With over 20 years of Operations Barry brings experience in retail, manufacturing, distribution and software companies in UK and Ireland. He has worked, on a voluntary basis, on various Town Centre Regeneration projects with Crieff Community Trust, mainly related to derelict buildings. He has been both Treasurer and Chair of Morrison's Academy Parents Association. His skills include facilities/supplier management, financial/project planning and brings a wide range of practical capabilities. Barry joined the board, as Treasurer, in 2016, and is keen to improve the efficiency of the operation, to ensure the charity continues to deliver benefits to its beneficiaries and is sustainable.

Trustee Craig Pagett

Craig has held senior roles in sales, marketing, and finance and brings a wealth of corporate experience gained in a variety of business sectors. Today, Craig is focused on the delivery and operation of significant infrastructure projects located in Europe and his responsibilities extend to corporate communications and business marketing. He runs a part-time photography business and has a particular passion for photographing mountain challenges. He firmly supports our ambitions for growth and Strathearn Arts benefits from his diverse business experience.

Trustee Elizabeth A. Hodson

Elizabeth holds a PhD in Social Anthropology and specialised in the anthropology of art. She supports Strathearn Arts through her in-depth knowledge of the arts, current debates and themes that are of contemporary concern. She currently works as a Lecturer in the Fine Art Critical Studies department at the Glasgow School of Art is a member of the school's Art's Equality, Diversity, and Inclusion committee. She is committed to ensuring equal access to education and for disadvantaged groups. In her role as Trustee, she contributes to the local community whilst also sharing her passion and insight for the arts.

Trustee Kim Osborne

Over 40 years with British Telecom, covering large business switchboards, electro-mechanical switching in Telephone Exchanges and most recently as a database developer. His interest in conservation and environmental issues led to his participation in a Cambridgeshire Conservation group and more recently, Chairman of Crieff in Leaf. Kim also has a strong interest in music and film, and this has led him into organising and supporting music festivals, including some sound engineering, in the past as well as being a member of the Film sub-group and film projection for Strathearn Arts.

Trustee Maddie Smallwood

Madeleine is a partner at Dentons UKME LLP and specialises in real estate development and infrastructure projects. Her expertise focuses on redevelopment projects including sustainable regeneration projects. Maddie has had a long interest in the arts and in promoting the success of community projects and welcomes the opportunity to work with the Strathearn Arts community, particularly with the focus on enriching people's lives and bringing the community together.

Meet the Team

Since the appointment of three part-time paid staff in 2019, Strathearn Arts has benefitted from the reliability and consistency that comes with professional employees. As a result, the organisation has grown and developed and, in 2021, with the opening of the Box Office and Shop at 2, Comrie Street, three further part-time staff were recruited. In 2022, as part of our strategy to improve our operational effectiveness, a finance and operations manager was appointed. We also identified the need for a dedicated member of staff to coordinate our community and volunteer engagement activities, so a member of the retail team, Poppy Sexton, moved to take up this role. All the staff live locally, between Crieff in the East and St Fillans in the West, and all are passionately committed to the growth and development of the Arts in Strathearn.



Angela Lennon, Interim Director/Arts Programme Manager

Angela joined the organisation in 2019 as one of the first members of staff. In her role as Arts Programme Manager, she curates the annual programme of events and oversees marketing and communications and produces our seasonal brochures. Angela has over 20 years of experience in the creative arts sector, with a proven track record of arts programming, audience development, festival and event management.



Gordon McDowall, Finance & Operations Manager

Gordon joined the team in January 2022 taking up the newly created position of Finance & Operations Manager. Gordon's responsibilities include all aspects of the day-to-day financial bookkeeping, production of management accounts, the smooth running of our building & improving our operational processes. Gordon has over 40 years' experience managing customer sales & service operations for global brands.



Emma McIntyre, Box Office Coordinator

Emma was the first member of staff to start with Strathearn Arts in 2019. She is responsible for managing the Box Office and Shop and coordinating the Box Office team of staff and volunteers. Emma has a background in finance administration but gained her retail and customer experience from her time as a retail owner of a shop in Crieff.



Poppy Sexton, Arts & Finance Administrator

Initially a volunteer with Strathearn Arts, Poppy joined the staff team in 2021 and is committed to encouraging participation and engagement with the arts in the community. Poppy's role involves coordinating our pool of volunteers, assisting with the administration of creative learning opportunities, venue hire and operational activities. Poppy is a dance graduate from Trinity Laban Conservatoire of Music and Dance with First Class Honours.



Shannon Huntley, Communications Designer

In 2021, Shannon joined the organisation as a part-time staff member. With over a decade of experience in the marketing and advertising industry as a Graphic Designer, Shannon is dedicated to creating high-quality messaging and branding for Strathearn Arts. Shannon is responsible for promoting all events and enhancing the brand's visual assets. Shannon's credentials include a BA Honours Degree in Visual Design and Communication.



Charlotte Revie, Retail Assistant

Charlotte is currently studying Technical Theatre at UHI, Perth and in her spare time enjoys going to concerts and shows with friends and playing guitar. As a member of the Box Office team, Charlotte has particular interest in selecting our stock of children and teenage books.



Akasha Mead, Retail Assistant

Akasha is a self-taught artist who is passionate about wildlife and nature. She successfully runs a small art business online and first became involved in Strathearn Arts as one of our Showcasers selling her work in our Box Office and Shop.



Our programme

The programme of events and activities is at the core of what we do as a charitable organisation. It is the main way in which we reach our communities, deliver our outcomes, and secure a sustainable future. Over the last few years, there has been a consistent focus on delivering a curated, more diverse, and higher quality programme of events and activities.

Growth

Before the impact of COVID, 2019/20 we expected to deliver somewhere between 60 – 70 events. In 2021/22 we delivered 65 events and in the current financial year 2023 we are on track to deliver over 80 events. Prior to the appointment of staff, we had limited audience data and the programme had fewer events. Over the past 2 years we have been able to build a pattern of audience attendance and identify some trends. Notably, the autumn and winter months are busy with our own events, community groups and hall hires. There is a tendency for audience numbers to drop off when the weather improves in the lead up to summer. This means we plan to programme more events during the autumn/winter season and remodel the summer programme to include off- site outdoor events, creative learning workshops and occasional films, gigs etc.

Diversity

The growth in the number of events goes together with a diversification in the target audiences and the genre of art being presented. There is now a new focus on widening our audiences by programming events that have a more diverse subject matter, targeting specific groups (e.g., families, young people) with engaging events and activities and offering a wider range of genres for example contemporary dance, puppet shows, documentaries and creative learning opportunities.

To support this increased diversity, in the year 2021/22 Film Hub Scotland (backed by BFI FAN & The National Lottery) provided funding to subsidise our film screenings and allowed us to focus on reaching new audiences with more diverse content.

Diversity is now at the core of our programming philosophy and will continue to develop and evolve in the years ahead.

Quality

Strathearn Arts is committed to bringing the highest possible quality performers, artists, and musicians to the area. In recent years, we've played host to well-known comedians like Allan Carr, Jo Cauldfield, Fred MacAulay and Mark Thomas, headline musicians such as Eddi Reader, Dougie MacLean, James Yorkston, The Skids and Horse Macdonald, theatre productions from Eden Court and Perth Horsecross and other touring companies.

Our film programme also reflects this imperative to present high quality art with films carefully chosen from among the best recent releases, indie film, old classics, and family favourites. Event Cinema also gives us the opportunity to bring some of the world's top theatre, opera, ballet, and music productions to our venue.

In 2022, we were delighted to announce a three-year sponsorship arrangement with The Glenturret Distillery to support our music programme. This funding helps take some of the risk out of attracting bigger and better names to play in Strathearn and will give local audiences a chance to see acts they'd normally have to travel to Tayside or the Central Belt for. To date, this funding has allowed us to host performances by Yorkston, Thorne & Ghatak, The Langan Band, Eddi Reader, Dougie MacLean, Dàimh and Breabach. The Glenturret Distillery funding has also meant we could provide additional support to the Crieff Folk Club, buying new kit, underwriting any loss on ticket sales and supporting local singer Naomi Harvey's Strathearn Song Circle.





Arts and the Community

Above all, Strathearn Arts is a community-led organisation. The board, the staff the volunteers and the members are comprised of people that live locally and therefore have strong interest in ensuring that the community benefits from its programme of events and activities. In addition to our arts programme, we have a growing number of community initiatives designed to address physical and mental health- and social disadvantages and improve lives. Alongside this, we work with local groups, as well as individual musicians, artists, and makers to support and promote their activities for the good of the community.

Community Projects

Over the past couple of years, Strathearn Arts has been developing a portfolio of projects which aim to provide direct health, wellbeing, and skills development benefits to people within our community.

Dance for Health

With funding from The Robertson Trust and Perth & Kinross Council's Community Investment Fund, Dance for Health adapted from an in-person dance class for people living with Parkinson's Disease, into a thrice-weekly online Zoom class during COVID. Today, the funding continues to support one online class and one in person free class called 'Drop in to Dance' which is proving very popular with an average of 20 participants each week.

Building developments

Acquired from Perth & Kinross Council in 2016, using public funding from the Town Centre Community Capital Fund, our building at 6, Comrie Street is our biggest asset and facilitates so much of what we do. It is a hugely important community resource used and loved by many groups and individuals for a wide variety of arts and other purposes, bringing new life and identity to a landmark listed building. Now, with an eye to the growth and development of the arts in Strathearn, a bold new plan has been conceived with help from leading Scottish architects, Fraser Livingston (FLA), which will take the facilities to a new level and create a fit-for-purpose 21st Century arts centre at the heart of Crieff.

The building today

Through the hard work and focus of the team of trustees, staff and volunteers, the building has been well-cared for, maintained and developed since its acquisition by Strathearn Arts in 2016. It has several flexible and well-used spaces available for its own use and for hire, with special rates available to community groups and charities. The hire of our rooms and facilities has always represented an important and growing source of income for the charity. Recently, we have seen a significant increase in enquiries and bookings which augurs well for the year ahead.

Auditorium

Our largest space seats up to 200 people. It is used extensively for live music performances, film screenings, event cinema, theatre productions, ceilidhs, classes, rehearsals, dance, exhibitions, meetings, etc. It is served by a closed-loop hearing system to support those with hearing difficulties.

Side Space

Adjacent to the Auditorium is our "Side Space". This is a smaller, more intimate space seating up to 30 people. It's ideal for smaller meetings, cosy concerts, and music groups. It also serves as our bar area during events. It has recently been upgraded with a new sliding partition system separating it from the main auditorium and a well-equipped permanent bar.

Mezzanine

Accessed via stairs complete with stair-lift, the Mezzanine is used for exhibitions and also serves as our technical hub for events.

Conference Room

On our lower ground floor, our well-equipped conference room can seat up to 22 in "theatre style" or as a 12-seat boardroom.

Project Room

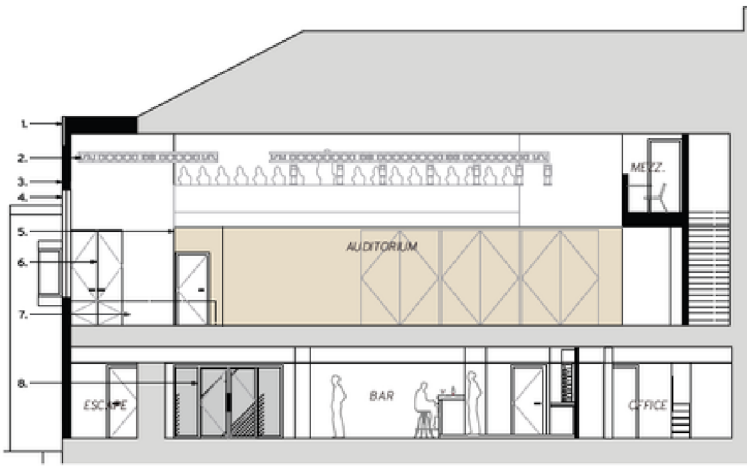
Thanks to the work of our volunteers and the very generous contribution of Scott Cramb Construction Ltd, we have created a purpose-built art-room for small art groups or classes of up to 10 people.

Can Do Crieff

We are delighted to be continuing our relationship with Crieff Community Trust for their shared working space initiative. Approx 20 workstations available. Many of these spaces are available for regular or ad hoc rental with preferential rates applied to local community groups and charities.

Many of these spaces are available for regular or ad hoc rental with preferential rates applied to local community groups and charities.





Working together with Fraser Livingston Architects and Strathearn Arts have developed a concept design for a comprehensive overhaul of the building. The goal is for a clean, modern and highly functional space that will support the growth and development of Strathearn Arts for many years to come.



Planned developments

Working together, Fraser Livingston Architects and Strathearn Arts have developed a concept design for a comprehensive overhaul of the building. The goal is for a clean, modern and highly functional space that will support the growth and development of Strathearn Arts for many years to come.

Following several community consultations that have been commissioned in recent years, as well as discussions with- and feedback from audiences, performers and other visitors and users of the building, a number of Strategic Goals were developed for the redevelopment project. In total 11 architect practices were invited to respond with a proposal for a feasibility study/ concept design. Fraser Livingston Architects were selected on the strength of their relevant experience, understanding of the brief and needs of Strathearn Arts and the inclusion in their design team of a specialist theatre designer.

The key developments will include:

1. New more visible and accessible entrance on Lodge Street leading to reception area, offices and professionally equipped bar/ café/ bistro which also doubles as performance/ meetings space.
2. New stairwell and lift between lower ground floor and main auditorium improving accessibility and connecting event space with catering space below.
3. Re-worked and extended stage area. Larger stage area with access possible from both sides.
4. Superb views through a new, large corner window to improve “daytime use” (e.g., meetings, conferences etc) and improving visibility of the building from outside.
5. Improved facilities for performers (well-equipped green rooms) and visitors (bar/catering facilities, meeting rooms, toilets)
6. State of the art flexible seating system allowing for tiered seating and multiple configurations for different types of performances etc (e.g., Cabaret, Side-on, End-on, Thrust and In-the-round). Also, seating installed at mezzanine level to increase capacity and improve theatre atmosphere.
7. Technical equipment for the auditorium including lighting rigs, DCP projector, sound equipment, new technical booth located on the mezzanine level.

Next Steps

Following on from the feasibility study, Strathearn Arts has worked with Athena Consulting to complete the Business Plan and Funding Strategy needed to secure the necessary funding for this ambitious project and is now working to prioritise the next steps in realising the development. With thanks to Architectural Heritage Fund, Perth & Kinross Council and The Gannochy Trust for their support for this project.

STRATHEARN ARTSPACE SCIO (SC044319)

STATEMENT OF FINANCIAL ACTIVITIES INCLUDING INCOME AND EXPENDITURE ACCOUNT FOR THE YEAR ENDING 30 SEPTEMBER 2022

	2022	2021	2020
	£	£	£
Income			
Donations	1,636	4,001	3,821
Grants	78,781	138,885	125,602
Events	37,638	15,962	19,139
Retail	32,351	21,881	-
Rentals	13,500	9,240	13,391
Trading- Sponsorship	19,326	5,957	2,957
Trading- Other	-	-	634
Investments	1	-	-
Other	-	2,071	-
Total Income	183,233	197,997	165,544
Expenditure			
Showcase Stock	18,974	14,872	-
Staff Costs	93,310	45,778	37,145
Depreciation	9,778	9,608	5,051
Artist Fees	18,638	12,205	15,099
Outgoing Rent	5,200	5,200	1,145
Event Catering	3,535	100	3,253
Utilities	10,747	8,051	7,082
Building/Office Supplies	4,921	905	5,011
Maintenance	12,133	8,808	4,401
Professional Fees	4,572	16,533	1,364
Advertising/Marketing	7,582	1,722	8,588
Communications	4,811	2,619	2,369
Insurance	3,872	2,778	2,717
Projects Costs	31,076	24,154	-
Outgoing Donations	336	1,135	-
Accountancy/Examination	3,276	3,660	-
Total Expenditure	232,761	158,128	93,225
Net (expenditure)/income for the year			
Net Movement of Funds	(49,528)	183,125	72,319
Previous Year Fund Balances	313,635	273,766	201,447
End of Year Fund Balances	264,107	456,891	273,766

Our Funders and Sponsors

Strathearn Arts has been exceptionally fortunate to work with a range of supportive and encouraging funders over the last 12 months. Their backing has supported us through the recovery period following the pandemic, allowed us to bring in and retain our excellent team of staff members and enabled a range of projects and initiatives that are having a hugely beneficial impact on our community here in Strathearn.

Funders



The Gannochy Trust
Core Funding for staff
COVID Relief
Business Planning &
Funding Strategy



The Robertson Trust
Dance For Health
Creative Scotland
COVID Relief



Culture & Business
Fund Scotland
Programme
Development / Core
Funding



Architectural Heritage Fund
Business Planning and Funding
Strategy



The Corra Foundation
COVID Relief



SCVO Adapt & Thrive
Covid Relief



Strathearn and Strathallan Action
Partnership
Art for Wellbeing



BFI FAN (Film Hub Scotland)
Film Screenings



Foundation Scotland
Scotland's Community Foundation

Foundation Scotland
Art for Wellbeing



Northwood Charitable Trust
Youth Film Project



The Touring Network
Touring Artists
Strathearn Arts Festival 2021



TAYSIDE HEALTHCARE ARTS TRUST

Tayside Healthcare Arts Trust



Perth & Kinross Council
Dance for Health
Business Planning and
Funding Strategy



The Russell Trust
Youth Film Project



NHS Tayside Community
Innovation Fund
Community Arts Engagement



ALBA | CHRUTHACHAIL

Creative Scotland
COVID Recovery funding

Sponsors





STRATHEARN ARTS

Strathearn Artspace (known as Strathearn Arts) is
a Scottish Charitable Incorporated Organisation
(SCIO SC044319)